



MONTHLY MEMBERSHIP PROGRESS REPORT

District 32 C

Results as of: 5/31/2016

GMT: HARVEY WHITLEY

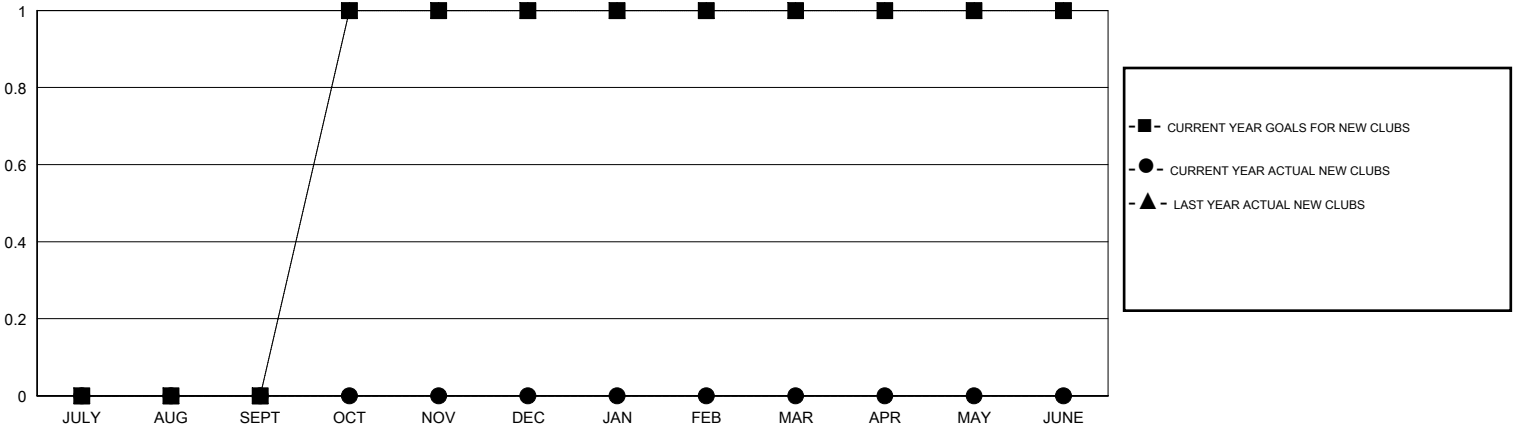
LOCATION SOUTH CAROLINA

GMT CA 1

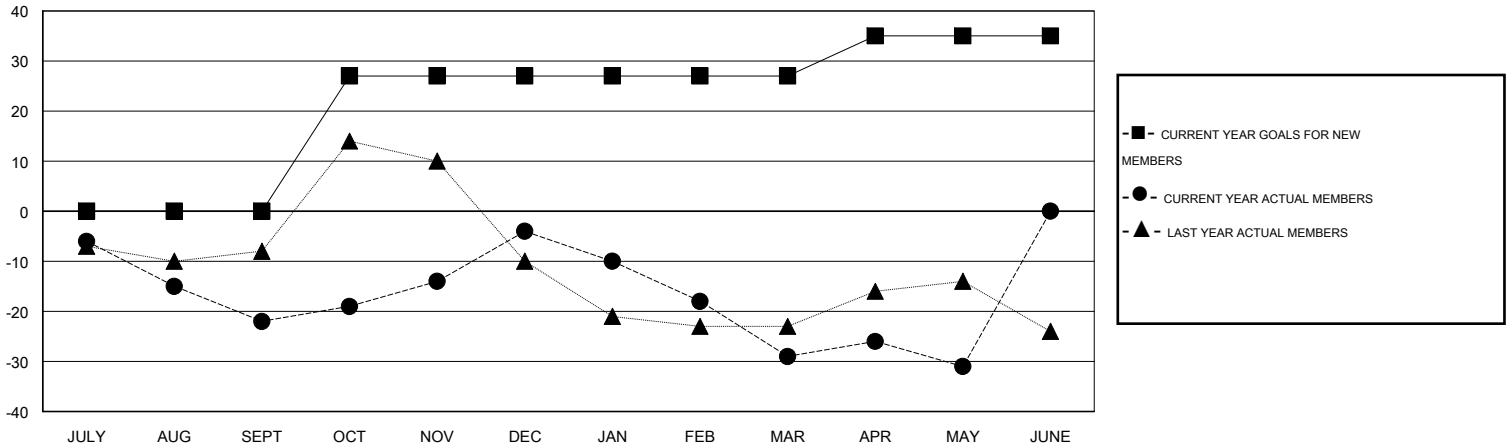
Clubs				
RESULTS FOR 2015-2016				
QUARTER	NEW CLUB GOAL	NEW CLUBS	DROPPED CLUBS	NET GAIN/LOSS
JULY/AUG/SEPT	0	0	0	0
OCT/NOV/DEC	1	0	0	0
JAN/FEB/MAR	0	0	2	-2
APR/MAY/JUNE	0	0	0	0

Members				
RESULTS FOR 2015-2016				
QUARTER	NEW MEMBER GOAL	CHARTER AND NEW MEMBERS ADDED	DROPPED MEMBERS	NET GAIN/LOSS
JULY/AUG/SEPT	0	19	41	-22
OCT/NOV/DEC	27	36	18	18
JAN/FEB/MAR	0	22	47	-25
APR/MAY/JUNE	8	15	17	-2

GOALS AND ACTUAL NEW CLUBS CUMULATIVE



GOALS AND ACTUAL MEMBERS CUMULATIVE



DROPPED CLUBS: 2

29 CLUBS OF 42 ADDED 1 OR MORE NEW MEMBERS

GENDER DISTRIBUTION	
MALE	686 (75.88%)
FEMALE	218 (24.12%)

DROPPED MEMBERS	
DECEASED	16
CLUB CANCELLED	11
OTHER	94
TOTAL	121

[CLICK HERE FOR HEALTH ASSESSMENT DATA](#)

FAMILY UNIT MEMBERS	140
HEAD OF HOUSEHOLD	69
NON-HEAD OF HOUSEHOLD	71